

VEHICLE EXHAUST EXTRACTION



# ASA

Balancer and swivel arm extractors  
for workplaces with stationary vehicles



**MOVEX**  
PURE ADVANTAGE



# Balancer and swivel arm extractors for workplaces with stationary vehicles

**MOVEX ASA** – a robust balancer extractor for removing exhaust fumes from stationary vehicles. The product is comprised of a balancer and a hose and is available in models with an articulated swivel arm length of 10 / 14 / 21 / 27 feet.

MOVEX ASA is optimized for use with the Movex range of fans and automatic control units and is available in the sizes Ø4 / 5 / 6 inch.



## ASA with an articulated swivel arm covers the needs of several workstations

**MOVEX ASA** with an articulated swivel arm covers several workstations. The two-way articulated joint in the centre of the arm ensures a flexible extractor throughout the entire working radius. The swivel arm is mounted on a wall or a pillar, with an estimated working radius of 20–36 feet depending on the selected swivel arm length. The bracket is fitted with a friction brake to ensure a swivel arm with great positional stability.

The exhaust extractor connects to a separate fan or an existing extraction system and is complemented with a suitable exhaust nozzle.

### Hose and balancer

The standard hose is 16 feet long, crush-resistant and heat resistant up to 340 °F. If a longer hose is required, it can be extended in multiples of 8 feet. Hoses for higher temperature are also available upon request.

The balancer is fitted with a 11 feet wire cable and a spring-loaded ratchet. Pull the hose down to the desired position and it stays put. Give the hose a sharp tug and it retracts to its starting position. A longer wire cable can be provided upon request.

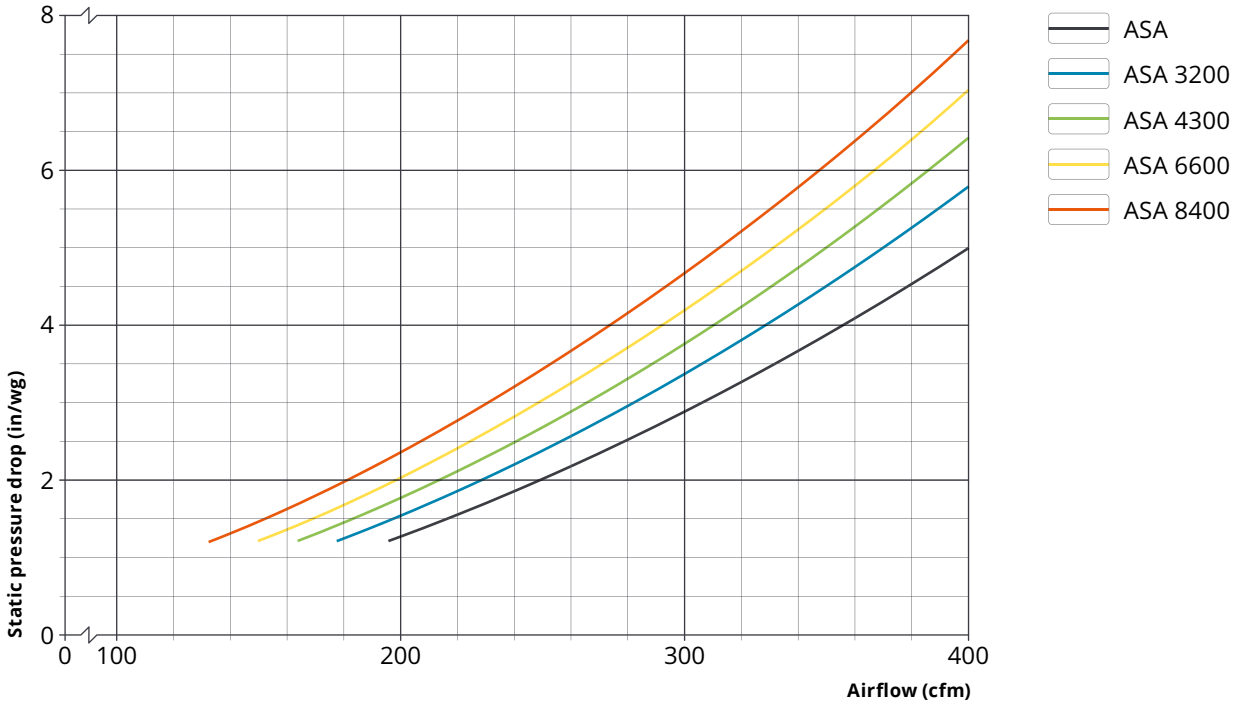


### Exhaust nozzle

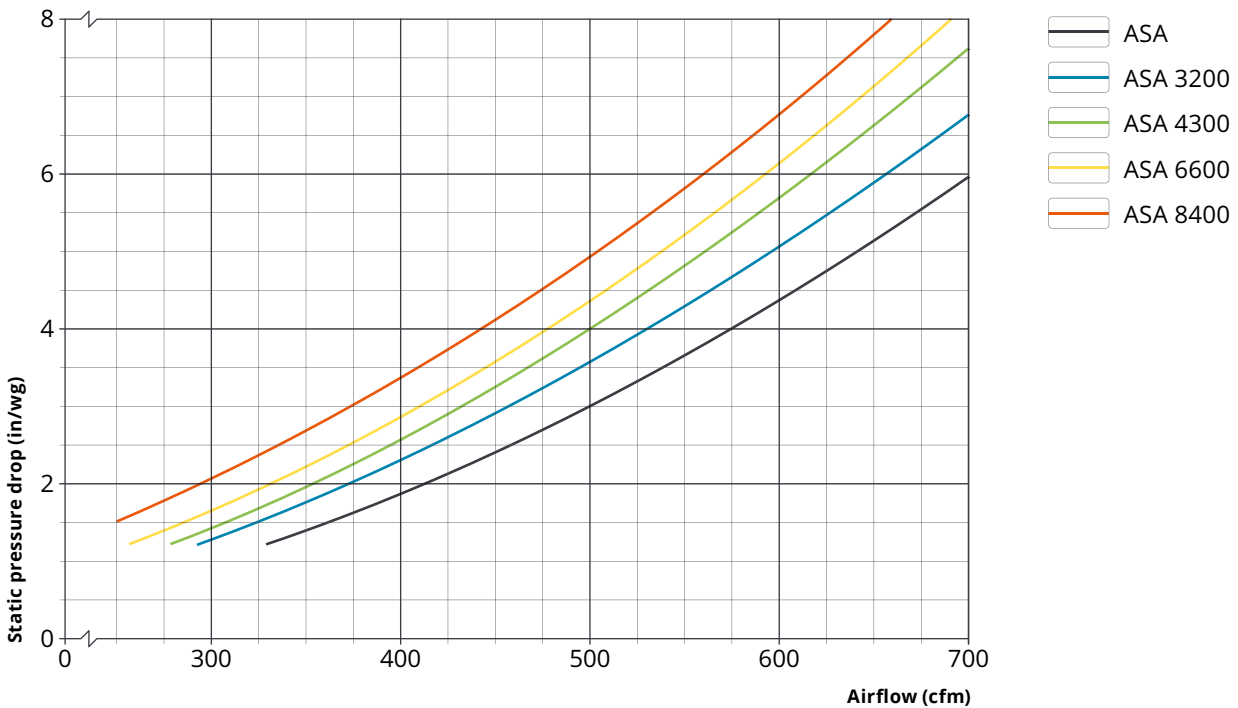
See separate product sheet or scan QR code.

# Pressure drop diagram

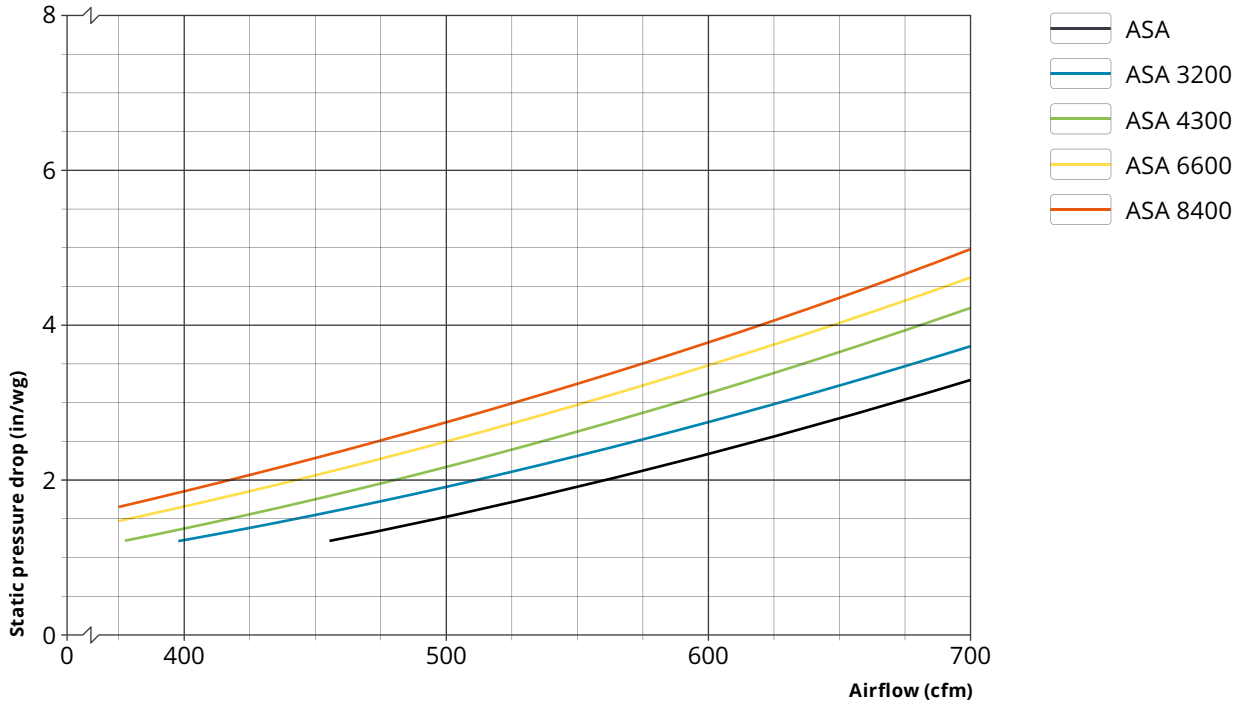
ASA Ø4"



ASA Ø5"



## ASA Ø6"



### Recommended installation height

The recommended installation height for MOVEX ASA is 10-13 feet. Greater installation heights may require a longer hose and a larger balancer.

### Sizing the installation

Installations are normally sized for idling vehicles. The airflow should be slightly higher than the specified exhaust fume production. The installation as a whole should be sized to handle higher loads than the minimum requirements.

### Recommended airflow for extractor in vehicle workshop

The recommendations apply at low engine speeds and low engine loads.

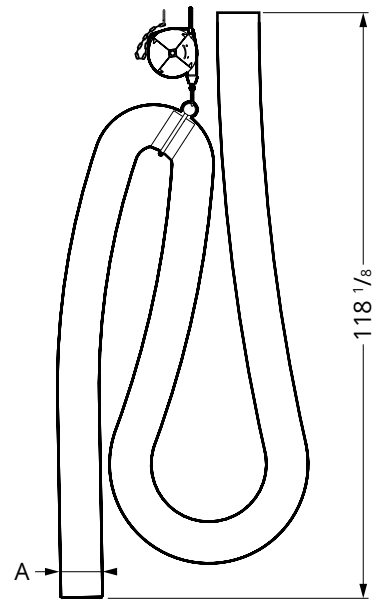
Workshop type	cfm
Passenger cars	250
Trucks	600

### Miscellaneous

For information on nozzles and automatic control units, see separate product sheets.

# Dimensional drawing (in)

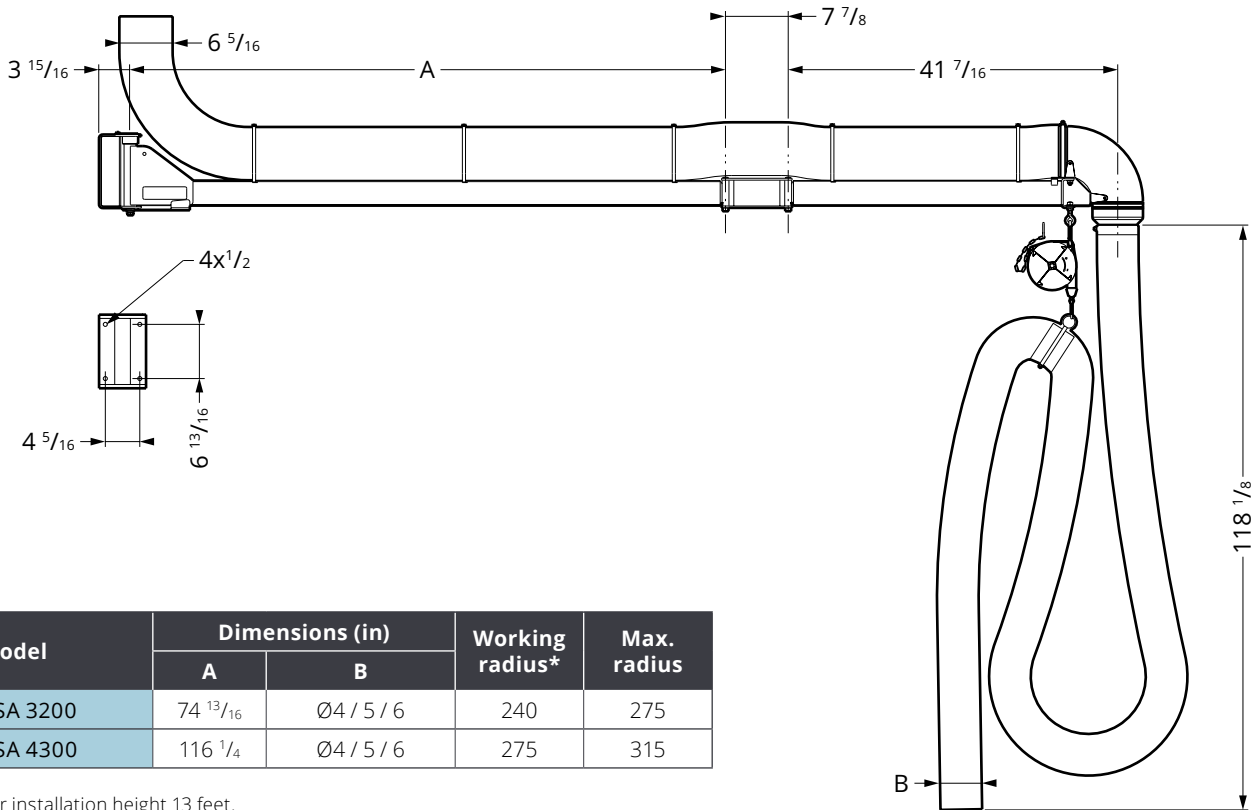
ASA



Model	Dimensions (in)		Working radius*	Max. radius
	A			
ASA	Ø4 / 5 / 6		120	160

\* For installation height 13 feet.

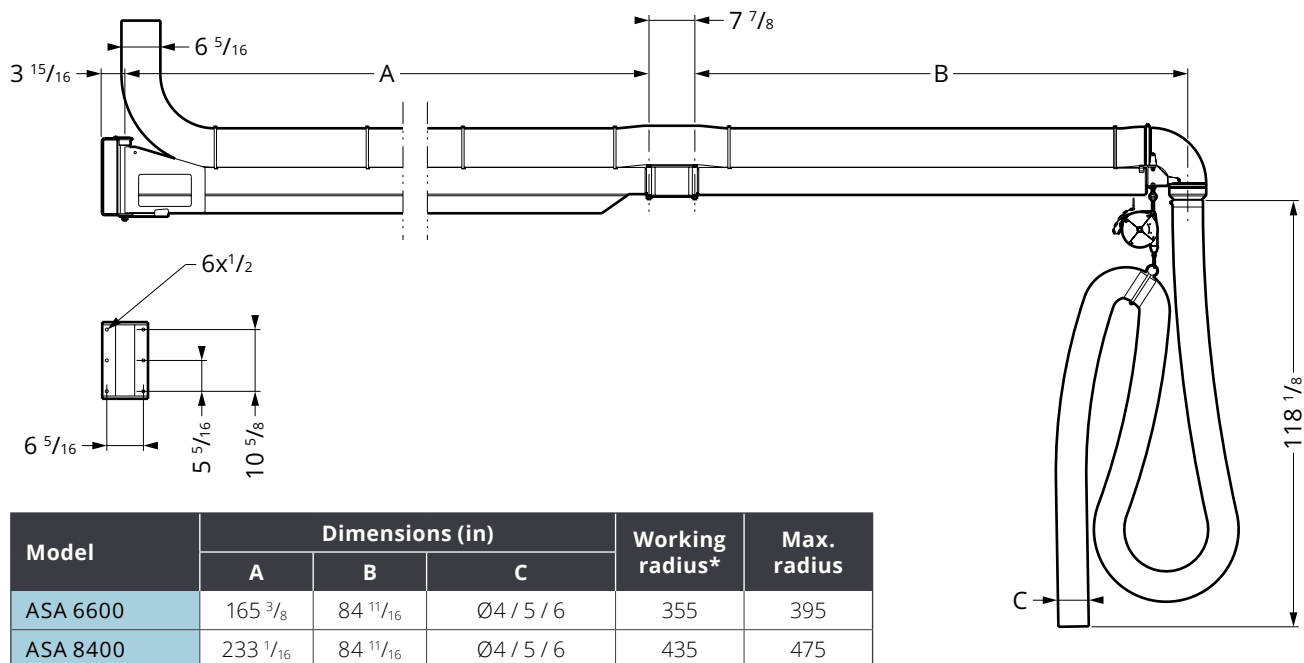
## ASA 3200 / 4300



Model	Dimensions (in)		Working radius*	Max. radius
	A	B		
ASA 3200	74 13/16	Ø4 / 5 / 6	240	275
ASA 4300	116 1/4	Ø4 / 5 / 6	275	315

\* For installation height 13 feet.

## ASA 6600 / 8400

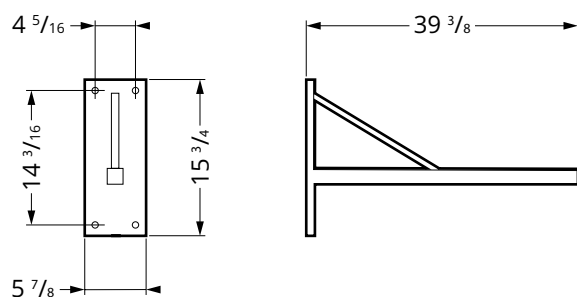


\* For installation height 13 feet.

## Accessories

### ASA V

Wall bracket for ASA for direct wall mounting.

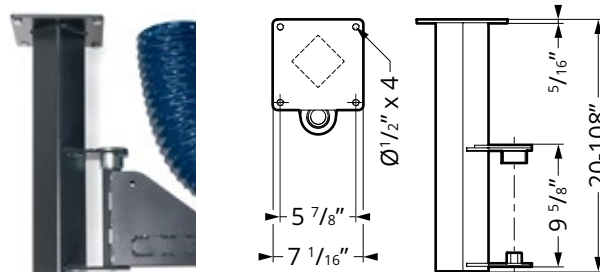


Part	Working radius*	Max. radius
ASA V	160	200

\* For installation height 13 feet.

### PTZ

Ceiling and floor bracket. 180° of rotation. Suitable for ASA 3200 / 4300.



PTZ	500	1000	1500	2000	2500*
<b>Lenght (in)</b>	19 11/16	39 3/8	59 1/16	78 3/4	98 7/16
<b>Weight (lb)</b>	16.8	26.5	36,6	46.7	56.7

\* Floor bracket

# Specifications

## FORM OF DELIVERY

Supplied complete with fixtures and fittings and 16 feet hose attached to balancer for easy installation. For nozzles, fans or other hose types, see separate product sheets.

## HOSE

Heat-resistant, rubberized fabric EPDM/polyester. Coiled EPDM-coated polyester. Crush-resistant (recovers shape if driven over).

## BALANCER

Coil spring with ratchet, painted plastic housing.

## TECHNICAL DATA

### Surface finish

Sheet metal parts: Powder-coated or electro-galvanized

### Hose

Properties: ..... Flame-resistant, suitable for ..... vehicle exhaust fumes  
Temperature range:..... -22 °F to 340 °F

### Balancer

Wire cable length: ..... 138"  
Lifting force: ..... 11–31 lb or 17–37 lb

### Weight\*

ASA: ..... 18 lb  
ASA 3200: ..... 68 lb  
ASA 4300: ..... 84 lb  
ASA 6600: ..... 141 lb  
ASA 8400: ..... 187 lb

---

\* Varies slightly depending on the selected hose size and type.  
Stated weights are with standard Ø6" hose.