



S 400

Control unit 24 V

Area of use

S 400 is developed for automatic control of the damper motor SAS 24 for opening and closing of damper.

Function

Controlling time delay to evacuate remaining gases is built into the control unit (1, Fig 1). Time is adjustable from between 0-15 minutes.

Fans are usually controlled by the S 600 transformer unit, and in those cases the S 400 is supplied with 24 VAC (2) from the S 600.

The LED (3) indicates operation.

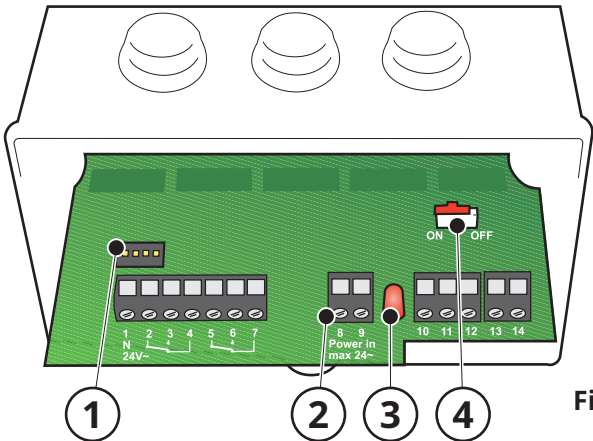


Fig. 1

Technical data

- Dimensions:..... 5 1/8 x 4 1/8 x 3 1/16"
- Weight: 9.35 oz
- Material: ABS/PC
- Enclosure class: IP54
- Ambient temperature: 32 °F to 122 °F
- Power supply:..... 24 VAC
- Terminal: Max 1.5 mm² / terminal
- Meet standards: Rohs directive 2011/65/EU

Installation

See circuit diagram page 2, Fig 5.

- 1-4, 24V~ Connection damper SAS-xxx/24
- 5-7, Potential free VX-connection (Max 24V~)
- 8-9, 24V~ Power supply
- 10-14, Connection sensors (NPN, 15V)

Built in timer

To activate / deactivate timer adjust the switch (4, Fig 1). If timer is placed in ON mode this will enable adjustments of time delay on the switch panel (1) as illustrated below.

Delivery setup

The timer is activated and set on 1 minute, see Fig 3.

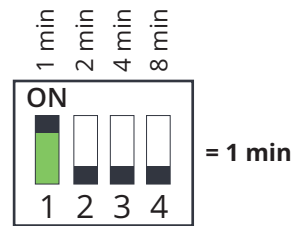


Fig. 2

Example of setup (Fig 3-4):

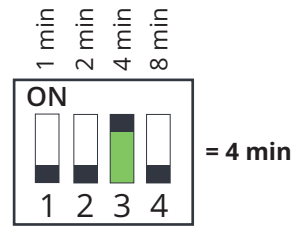


Fig. 3

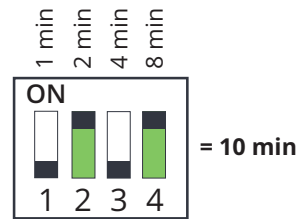


Fig. 4

Maintenance

Maintenance free.

Accessories

STG 400, for automatic adjustments, connect to ground cable on the welding machine for automatic start / stop.

SSB, SFC SB, Switch for manual start / stop.



Circuit diagram

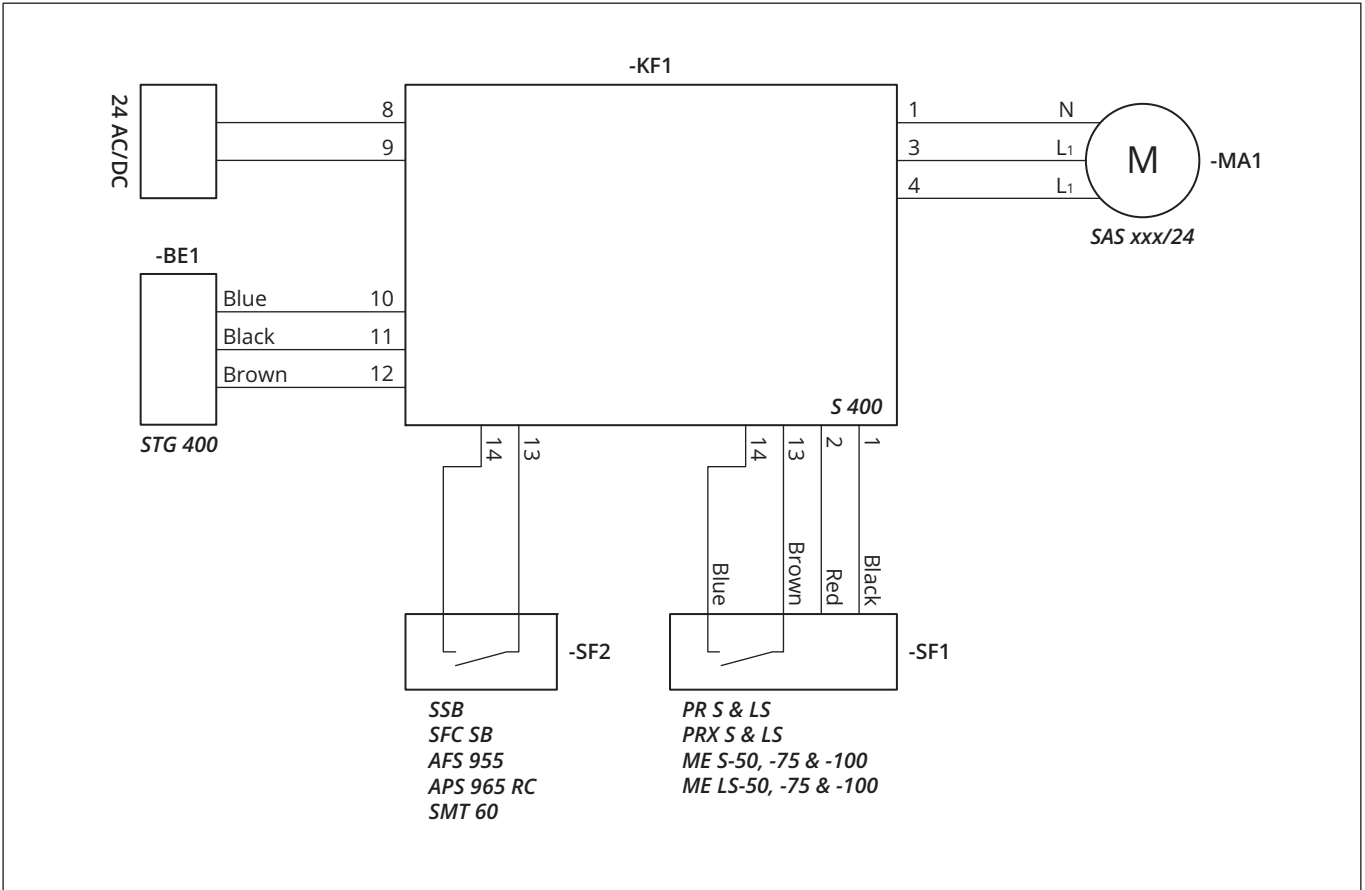


Fig. 5